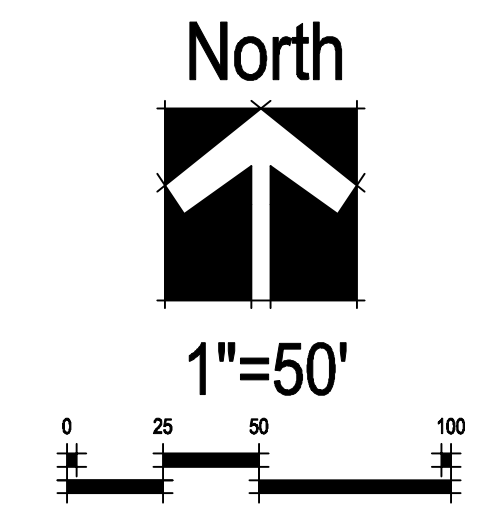


FINAL PLAT FOR PRAIRIE VILLAGE, FILING NO. FOUR

A PARCEL OF LAND SITUATED IN THE NORTHWEST QUARTER OF SECTION 26, TOWNSHIP 3 NORTH, RANGE 69 WEST OF THE SIXTH PRINCIPAL MERIDIAN, COUNTY OF BOULDER, STATE OF COLORADO



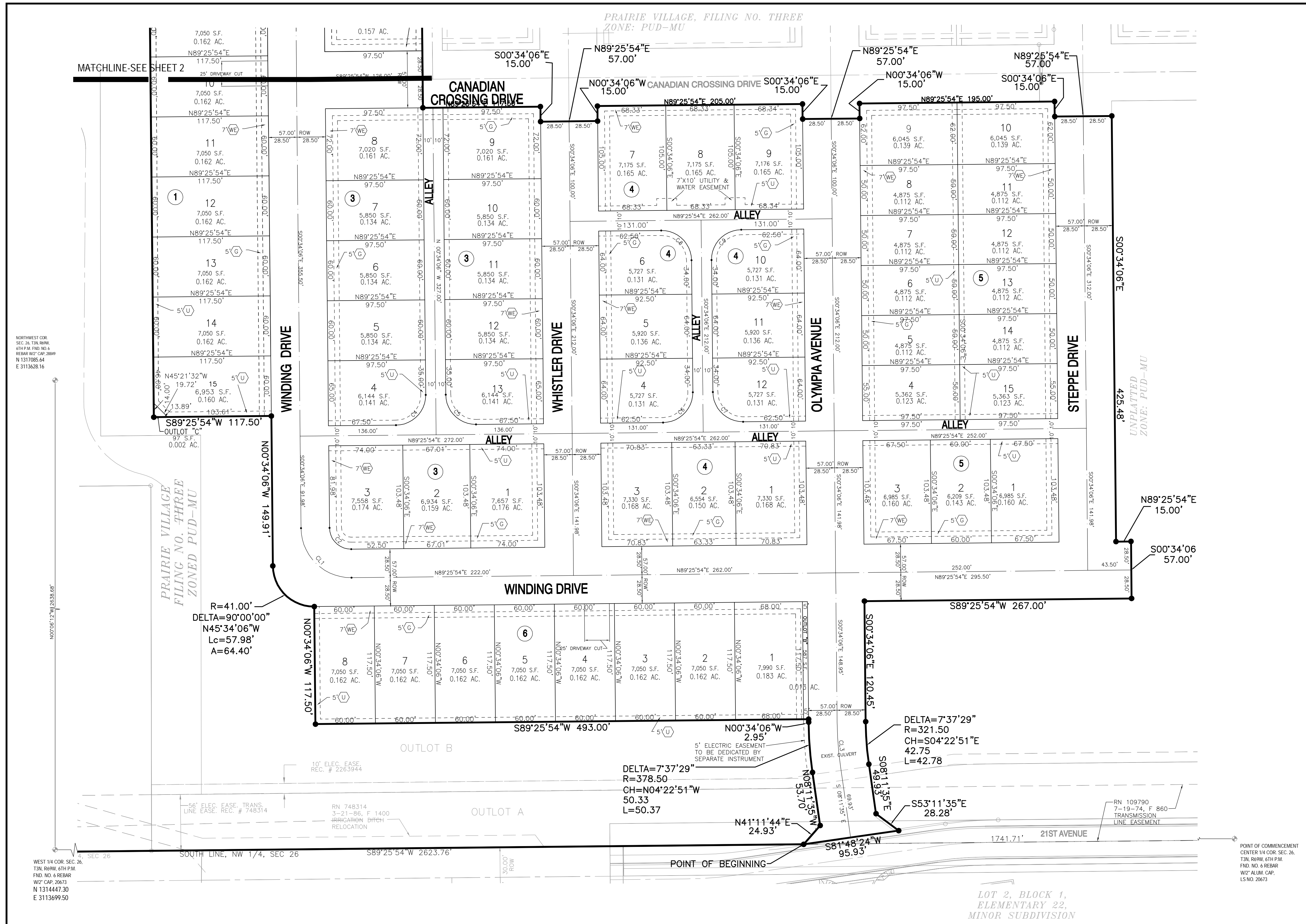
LEGEND:

- FOUND SECTION CORNER AND MONUMENTED AS SHOWN
- FOUND MONUMENT
- SET NO. 5 PIN AND CAP LS NO. 20673
- 7.00' WATER & LPC EASEMENT
- 5.00' GAS EASEMENT
- 5.00' UTILITY EASEMENT

CURVE TABLE:

CURVE TABLE					
CURVE	RADIUS	DELTA	CHORD	CH. LENGTH	LENGTH TANGENT
C1	50.00'	90°00'00"	S45°34'06"E	70.71'	78.54' 50.00'
C2	21.50'	90°00'00"	S45°34'06"E	30.41'	33.77' 21.50'
C3	350.00'	7°37'29"	S04°22'51"E	46.54'	46.58' 23.32'
C4	30.00'	90°00'00"	N44°25'54"E	42.43'	47.12' 30.00'
C5	30.00'	90°00'00"	S45°34'06"E	42.43'	47.12' 30.00'
C6	30.00'	90°00'00"	N44°25'54"E	42.43'	47.12' 30.00'
C7	30.00'	90°00'00"	S45°34'06"E	42.43'	47.12' 30.00'
C8	30.00'	90°00'00"	N45°34'06"E	42.43'	47.12' 30.00'
C9	30.00'	90°00'00"	S44°25'54"W	42.43'	47.12' 30.00'

CURVE TABLE LEGEND:
 CL-CENTERLINE CURVE
 C-LOT CURVE



LOT 2, BLOCK 1, ELEMENTARY 22, MINOR SUBDIVISION

WEST 1/4 COR. SEC. 26, T3N, R69W, 6TH PM, FND. NO. 6 REBAR, W/2 CAP, 20673, N 1314447.30, E 3113699.50

RECORD	DATE	DESIGNED BY
INITIAL SUBMISSION	8/02/04	---
DRG. RESPONSE	03/08/05	JJA
DRG. RESPONSE	06/21/05	PB

TETRA TECH RMC
 1900 S. SUNSET ST., SUITE 1-F, LONGMONT, CO 80501
 TEL 303.772.5282 METRO 303.665.6283 FAX 303.665.6959

FINAL PLAT FOR PRAIRIE VILLAGE, FILING NO. FOUR **3 OF 3**